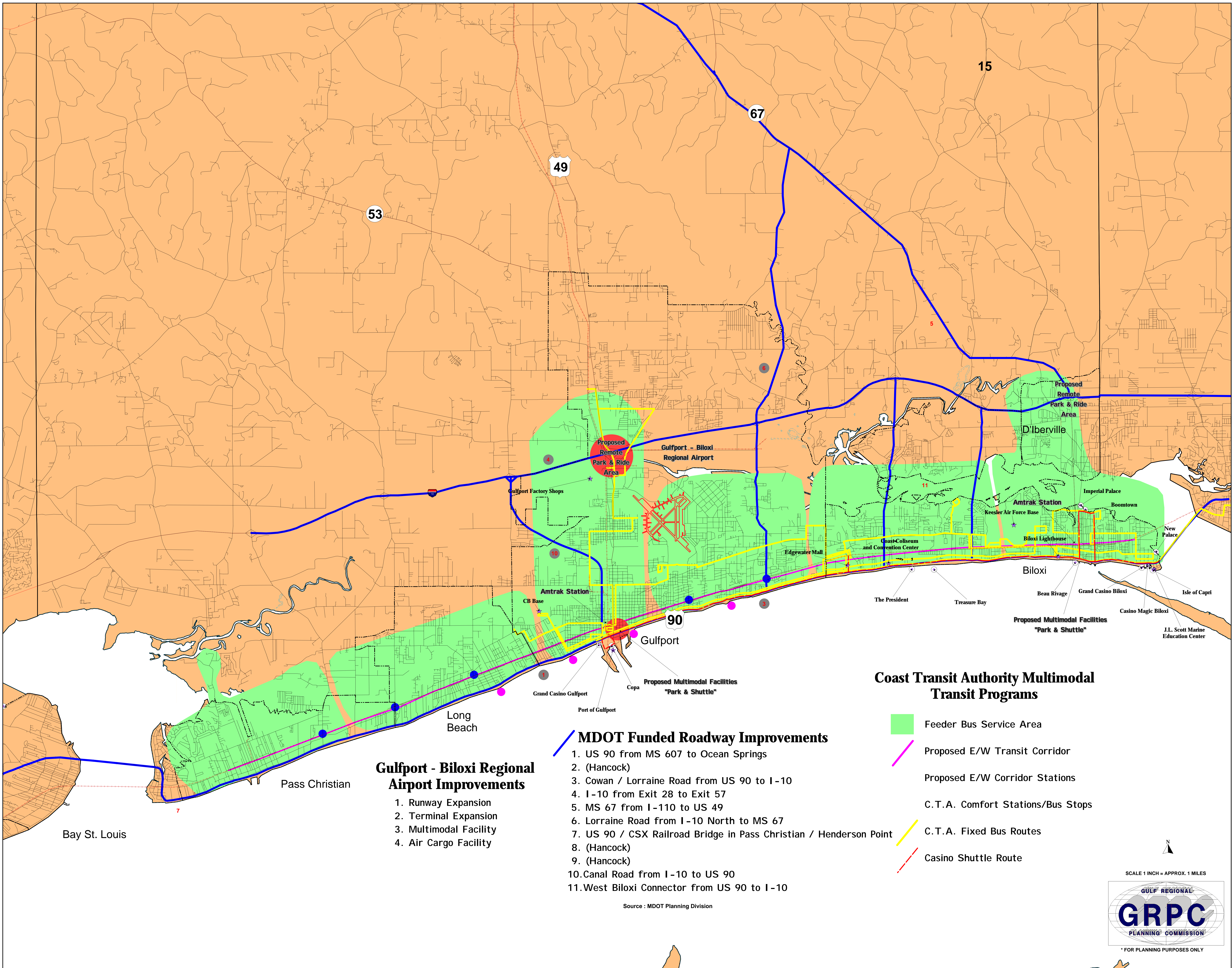


Harrison County Multimodal Capital Improvements



Gulfport - Biloxi Regional Airport Improvements

1. Runway Expansion
2. Terminal Expansion
3. Multimodal Facility
4. Air Cargo Facility

MDOT Funded Roadway Improvements

1. US 90 from MS 607 to Ocean Springs
2. (Hancock)
3. Cowan / Lorraine Road from US 90 to I-10
4. I-10 from Exit 28 to Exit 57
5. MS 67 from I-110 to US 49
6. Lorraine Road from I-10 North to MS 67
7. US 90 / CSX Railroad Bridge in Pass Christian / Henderson Point
8. (Hancock)
9. (Hancock)
10. Canal Road from I-10 to US 90
11. West Biloxi Connector from US 90 to I-10

Source : MDOT Planning Division

Coast Transit Authority Multimodal Transit Programs

- Feeder Bus Service Area
- Proposed E/W Transit Corridor
- Proposed E/W Corridor Stations
- C.T.A. Comfort Stations/Bus Stops
- C.T.A. Fixed Bus Routes
- - - Casino Shuttle Route

SCALE 1 INCH = APPROX. 1 MILES

FOR PLANNING PURPOSES ONLY