

Mississippi Gulf Coast Metropolitan Planning Organization
Gulf Regional Planning Commission
FY 2017-2018 UPWP

UNIFIED PLANNING WORK PROGRAM
FOR TRANSPORTATION PLANNING FOR
THE MISSISSIPPI GULF COAST
METROPOLITAN PLANNING AREA

FY 2017 – 2018

October 1, 2016 to September 30, 2018

Prepared by the
GULF REGIONAL PLANNING COMMISSION
Adopted: August 25, 2016

**Mississippi Gulf Coast Metropolitan Planning Organization
Gulf Regional Planning Commission
FY 2017-2018 UPWP**

The MPO UPWP

Gulf Regional Planning Commission serves as administrative and planning staff for the Mississippi Gulf Coast Metropolitan Planning Organization. This work program will guide the MPO and its planning staff to accomplish tasks and activities that will advance the following:

A. Guide/Support Transportation Decision Making

The MPO guides transportation decision-making by performing the planning and public administrative work necessary to develop and maintain the region's long-range plans, short range plans and Transportation Improvement Program (TIP). GRPC will maintain its certification as the MPO to insure that the region is eligible to apply and receive federal transportation dollars in accordance with federal regulations. The MPO will continue to carry out the metropolitan transportation planning in cooperation with the state and with operators of publicly owned transit services.

B. Facilitation, Education & Outreach

The MPO uses various techniques to engage the general public and other affected people in the MPO planning process. The MPO plans to actively reach out to engage nontraditional participants, to create new channels of communication and opportunities that will make the transportation system more responsive to the needs of the users. The MPO also educates stakeholders and promotes innovative measures to enhance the safety of the transportation system through tasks described in this document.

C. Project Development/Delivery

MPO staff monitors existing transportation conditions through activities identified in the UPWP. These tasks lead to the identification and development of transportation projects that specifically address MPO goals and objectives. The MPO has become a steward of project readiness and *Every Day Counts*, and works closely with the LPAs to maintain the project development schedule.

D. Looking Ahead

The UPWP describes the efforts of the MPO to collect and analyze relevant data and to conduct research on trends and conditions that will shape the future of our transportation system. During FY 2017- 2018 the MPO expects to work with many partners to better understand the future needs for mobility and access, to plan a system that will support our diverse population and the economy on the Mississippi Gulf Coast, from the aging baby boomers to the millennials, those living in urban and rural environments. The MPO will be closing gaps, making connections and improving safety for economic and social opportunities, and supporting a resilient infrastructure that will be sustainable against the natural threats of *living with water*.

**Mississippi Gulf Coast Metropolitan Planning Organization
Gulf Regional Planning Commission
FY 2017-2018 UPWP**

MPO Planning Funds

The purpose of Metropolitan Planning funds is to carry out the requirements of 23 U.S.C. 134 and provide for a continuing, comprehensive, and cooperative (3-C) metropolitan transportation planning process. In accordance with 23 U.S.C. 104 generally, Metropolitan Planning funds are made available from FHWA and FTA through the Consolidated Planning Grant Agreement to each Metropolitan Planning Organization (MPO) designated for an urbanized area with a population of more than 50,000 individuals and responsible for carrying out the 3-C metropolitan planning process

UPWP changes

Changes to the UPWP can be made as needed, however the following types of amendments require federal approval: An increase in federal funds, cumulative transfer among already approved work program line items greater than 10% of the total federal funds or \$100,000 (whichever is greater), change in scope or objectives of activities, extension of time period of the approved work program, transfer of substantive program work to a third party, and capital expenditures, including the purchase of equipment.

U.S. Department of Transportation Ladders of Opportunity

The MPO will use activities in the UPWP to help promote the U.S. Department of Transportation’s Ladders of Opportunity initiative to revitalize, connect and create workforce opportunities by guiding transportation decisions by the Mississippi Gulf Coast MPO and local public agencies to strengthen communities, create pathways to jobs and improve the quality of life for all.

MPO Planning Factors

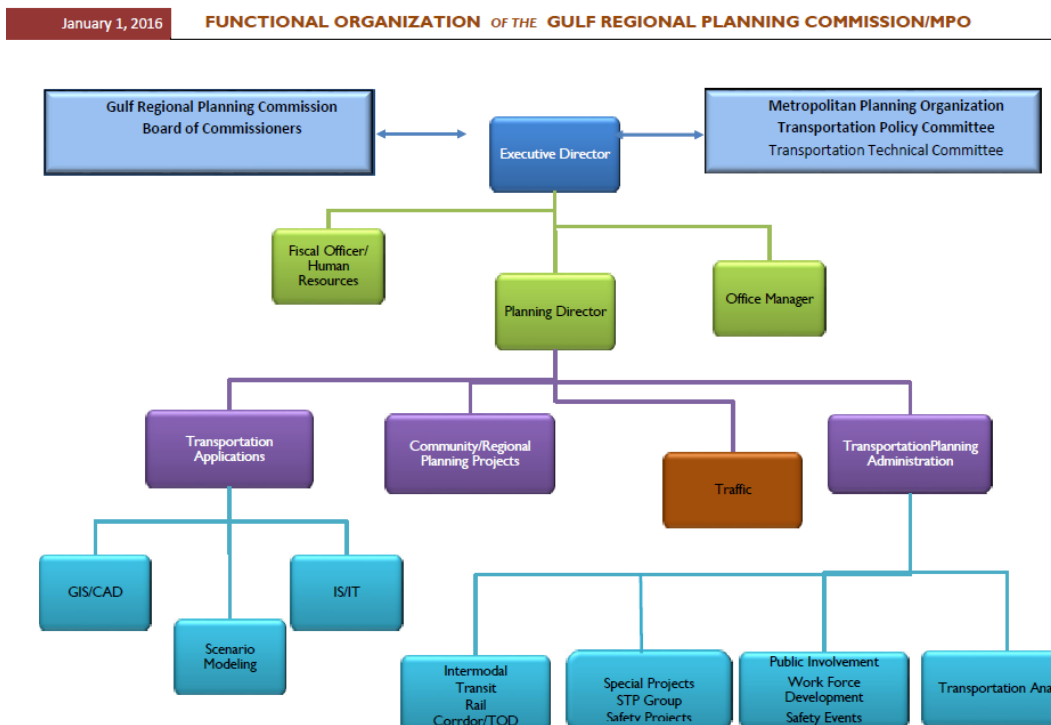
As required by 23 USC 134(h), the tasks in this work plan are components of the Mississippi Gulf Coast MPO’s transportation planning process that provide for consideration of projects and strategies that will address the following factors:

Economic	Support the economic vitality of the metropolitan area, especially by enabling global competitiveness, productivity, and efficiency
Safety	Increase the safety of the transportation system for motorized and nonmotorized users
Security	Increase the security of the transportation system for motorized and nonmotorized users
Options	Increase the accessibility and mobility of people and for freight
Coordination	Protect and enhance the environment, promote energy conservation, improve the quality of life, and promote consistency between transportation improvements and State and local planned growth and economic development patterns
Connectivity	Enhance the integration and connectivity of the transportation system, across and between modes, for people and freight
Operations	Promote efficient system management and operation
Preservation	Emphasize the preservation of the existing transportation system
Resiliency	Improving transportation system resiliency and reliability
Storm water	Reducing (or mitigating) the stormwater impacts of surface transportation
Tourism	Enhancing travel and tourism

Mississippi Gulf Coast Metropolitan Planning Organization
 Gulf Regional Planning Commission
 FY 2017-2018 UPWP

METROPOLITAN PLANNING PROCESS FACTORS AS ADDRESSED BY TASK												
		Economic	Safety	Security	Options	Coordination	Connectivity	Operations	Preservation	Resiliency	Stormwater	Tourism
A.1	MPO ADMINISTRATION AND PROGRAM MANAGEMENT	*	*	*	*	*	*	*	*	*	*	*
A.2	OUTREACH AND EDUCATION	*	*	*	*	*	*	*	*	*	*	*
B.1	TRANSPORTATION SYSTEM DEVELOPMENT				*		*	*	*			*
B.2	RESLIENCY AND LAND USE	*				*				*	*	
B.3	SAFE ROADS		*	*								
C.1	PLANNING TOOLS AND DATA DEVELOPMENT	*	*	*	*	*	*	*	*	*	*	*
C.2	INFORMATION SYSTEMS MANAGEMENT	*	*	*	*	*	*	*	*	*	*	*
D.1	TRAFFIC DATA COLLECTION PROGRAM	*	*									*
E.1	REGIONAL PROJECTS AND STUDIES	*	*	*	*	*	*	*	*	*		*

Organizational Chart



Mississippi Gulf Coast Metropolitan Planning Organization
 Gulf Regional Planning Commission
 FY 2017-2018 UPWP

STUDIES AND DELIVERABLES

A.2.4	Safe School Access Audits	FY 2018
B.1.1	Active Transportation Plan	FY 2017
B.1.2	East-West Mobility Study	FY 2018
B.1.4	CTA 5-year Plan Elements	FY 2017 & 2018
B.1.5	CTA Service Review Plan	FY 2017 & 2018
B.1.6	Off-street Paths Plan	FY 2017
B.1.7	Freight Truck Report	FY 2018
B.2.1	TOD Program	FY 2017
B.2.2	Climate Change Program	FY 2018
B.2.3	Regional Landuse Vision	FY 2018
B.3.1	Lane Departures Safety Report	FY 2017
B.3.2	Intersection Safety Report	FY 2017
C.1.3	Regional Apartment Survey	FY 2017 & FY 2018
C.1.6	NTD Passenger Sampling	FY 2017
E.1.1	Waveland Sidewalk Study	FY 2017
E.1.1	Jackson County McCann Road Study	FY 2017

Mississippi Gulf Coast Metropolitan Planning Organization
 Gulf Regional Planning Commission
 FY 2017-2018 UPWP

REVENUE AND EXPENDITURES

2017 - 2018 Anticipated Revenue									
ITEM	Total	PL funds	Local Match	FTA-FLEX	MDOT Match	SPR Funds	MDOT Match	FTA-5339	Match
Carryover	\$ 377,626	\$ 194,213	\$ 48,553	\$ 107,888	\$ 26,972				
FY 2017	\$ 1,105,762	\$ 544,288	\$ 136,072	\$ 180,322	\$ 45,080	\$ 120,000	\$ 30,000	\$ 40,000	\$10,000
FY 2018	\$ 1,124,855	\$ 555,776	\$ 138,944	\$ 184,108	\$ 46,027	\$ 120,000	\$ 30,000	\$ 40,000	\$10,000
TOTAL	\$ 2,608,243	\$ 1,294,277	\$ 323,569	\$ 472,318	\$ 118,079	\$ 240,000	\$ 60,000	\$ 80,000	\$ 20,000

2017 - 2018 Anticipated Expenditures									
TASK	Total	PL funds	Local Match	FTA-FLEX	MDOT Match	SPR Funds	MDOT Match	FTA-5339	Match
A-1 Staff	\$854,744	\$483,795	\$120,949	\$200,000	\$50,000				
A-1 Other	\$40,000	\$32,000	\$8,000						
A-2 Staff	\$140,833	\$85,348	\$21,337	\$27,318	\$6,829				
A-2 Other	\$15,000	\$12,000	\$3,000						
B-1 Staff	\$406,720	\$45,376	\$11,344	\$200,000	\$50,000			\$80,000	\$20,000
B-1 Other	\$15,000	\$12,000	\$3,000						
B-2 Staff	\$158,314	\$126,651	\$31,662						
B-2 Other	\$10,000	\$8,000	\$2,000						
B-3 Staff	\$63,275	\$50,620	\$12,655						
B-3 Other	\$20,000	\$16,000	\$4,000						
C-1 Staff	\$296,539	\$192,231	\$48,057	\$45,000	\$11,250				
C-1 Other	\$5,000	\$4,000	\$1,000						
C-2 Staff	\$255,383	\$204,306	\$51,076						
C-2 Other	\$27,435	\$21,948	\$5,487						
D-1 Staff	\$274,413					\$219,530	\$54,883		
D-1 Other	\$25,587					\$20,470	\$5,117		
TOTAL	\$2,608,242	\$1,294,275	\$323,567	\$472,318	\$118,079	\$240,000	\$60,000	\$80,000	\$20,000

“Other” includes but is not limited to items such as supplies for traffic counting, the use of consultants, travel for professional development/meetings, computer hardware and software, data needs, public involvement outreach needs, etc.

2017 - 2018 Planning Studies Revenue and Expenditures							
TASK	TOTAL	Sec. 5307	5307 Local Match	MPO STP	STP Local Match	SPR Funds	SPR Match
E.1		\$600,000	\$150,000	\$800,000	\$200,000		

Mississippi Gulf Coast Metropolitan Planning Organization
Gulf Regional Planning Commission
FY 2017-2018 UPWP

TABLE OF CONTENTS

A.1 MPO ADMINISTRATION AND PROGRAM MANAGEMENT

- A.1.1 MPO Administration and Management
- A.1.2 Unified Planning Work Program (UPWP)
- A.1.3 Transportation Improvement Program (TIP)
- A.1.4 MPO Member Support
- A.1.5 MPO Professional Development
- A.1.6 Maintain Functionally Classified Roadway Network
- A.1.7 MPO Performance Measures for FAST Act Requirements
- A.1.8 MPO Planning Program Contract Administration
- A.1.9 MPO Leadership
- A.1.10 Project Consideration and Implementation

A.2 OUTREACH AND EDUCATION

- A.2.1 Public Participation
- A.2.2 MPO Communication
- A.2.3 Transportation Workforce Development
- A.2.4 Safe School Access Audits

B.1 TRANSPORTATION SYSTEM DEVELOPMENT

- B.1.1 Active Transportation Plan
- B.1.2 East-West Mobility Study
- B.1.3 Rail Restoration
- B.1.4 Coast Transit Authority 5-year plan
- B.1.5 CTA Service Review Plan
- B.1.6 Off-Street Paths Program
- B.1.7 Gulf Coast Freight
- B.1.8 Update to CTA Plans

B.2 RESILIENCY AND LAND USE

- B.2.1 Transit Oriented Development (TOD) Program
- B.2.2 Climate Change
- B.2.3 Regional Landuse Vision

B.3 SAFE ROADS

- B.3.1 Lane Departures Program
- B.3.2 Intersection Safety Program
- B.3.3 Railroad Corridor Safety Program

Mississippi Gulf Coast Metropolitan Planning Organization
Gulf Regional Planning Commission
FY 2017-2018 UPWP

C.1 PLANNING TOOLS AND DATA DEVELOPMENT

- C.1.1 Land Use and Demographic Data
- C.1.2 GIS Support
- C.1.3 Regional Apartment Survey
- C.1.4 MPO Retroreflectivity Program
- C.1.5 Travel Demand Modeling
- C.1.6 NTD Passenger Sampling

C.2 INFORMATION SYSTEMS MANAGEMENT

- C.2.1 Technology Support
- C.2.2 Website Maintenance

D.1 TRAFFIC DATA COLLECTION PROGRAM

- D.1.1 Traffic Data Collection and Processing
- D.1.2 Traffic Data Analysis and Reporting
- D.1.3 Equipment Inventory, Acquisition and Maintenance

E.1 REGIONAL PROJECTS AND STUDIES

- E.1.1 MPO Projects and Studies
- E.1.2 Coast Transit Authority Projects and Studies (CTA)
- E.1.3 Mississippi Department of Transportation Projects and Studies (MDOT)

Mississippi Gulf Coast Metropolitan Planning Organization
Gulf Regional Planning Commission
FY 2017-2018 UPWP

A.1 MPO ADMINISTRATION AND PROGRAM MANAGEMENT

Responsible Party and Contact Information:

Name/Title: David Taylor
Telephone Number: 228-864-1167
Email: dtaylor@grpc.com

Purpose and Scope:

The purpose of MPO administration and program management is to conduct the business and administrate the finances of the MPO in accordance with federal regulations and the adopted MPO Prospectus. Task A-1 will focus on the policy and procedural matters of the MPO, the management of the plans and programs, and the provision of planning assistance and guidance on federal policies, program and regulations to MPO members and stakeholders. GRPC may contract with consultants for the performance of some tasks.

Accomplishments during Previous Work Program Period:

The MPO staff maintained fiscal accountability in accordance with federal regulations for grant administration, and project managers monitored staff and/or consultant performance on work assignments as required to accomplish UPWP tasks. Quarterly meetings of the Technical Coordinating Committee and Transportation Policy Committee were held to discuss transportation projects. The MPO adopted a Complete Streets Policy that requires sidewalks and bike facilities on roadways funded with federal funds. The FY 2015-2019 TIP was monitored and updated as necessary, including the addition and/or deletion of projects, project status and available funding. MPO staff worked with various LPAs on MPO funded studies including Long Beach's Pineville Road, Jackson County's Beachview Drive, and the initiation of Jackson County's bike study. MPO staff updated the TIP Handbook to include new project evaluation processes for STP projects and TAP projects. The MPO initiated a "call for projects" to develop the FY 2017-2020 TIP. Projects were received and the MPO worked with MDOT to adopt the final document.

Planned Activities for this Work Program:

A.1.1 MPO Administration and Management

The MPO will maintain the MPO office and personnel and will administer the transportation planning process in compliance with the current, appropriate federal and state regulations. The MPO will execute and implement the MDOT Planning Agreement in fulfillment of its responsibilities as the MPO for the two urban areas on the MS Gulf Coast. MPO staff will prepare and host quarterly TPC and TCC meetings to discuss issues, adopt policies and approve plans. The MPO will participate in the MDOT/MPO statewide quarterly meetings and meet with MDOT, FHWA, FTA and other organizations as needed to advance the planning program of the MPO. This is an ongoing task for the MPO.

Mississippi Gulf Coast Metropolitan Planning Organization
Gulf Regional Planning Commission
FY 2017-2018 UPWP

Deliverables A.1.1: MPO meetings and minutes, MPO/TMA certification

A.1.2 Unified Planning Work Program (UPWP)

The MPO will review, maintain and update the UPWP as needed. UPWP task progress reports will be provided to MDOT on a quarterly basis and the GRPC's Board monthly. This is an ongoing task for the MPO.

Deliverables A.1.2: Maintained and updated UPWP, MDOT reports and GRPC reports

A.1.3 Transportation Improvement Program (TIP)

The MPO will work with FHWA, MDOT and local LPA's to keep the TIP updated with current project timelines, project description and funding allocations. The MPO will periodically perform a TIP update that provides LPAs with opportunity amend existing projects and add new ones. The TIP Handbook outlines the updated TIP project selection process and project development process. MPO staff will work to ensure that regional projects adhere to the MPO's Complete Streets policy. The MPO will work to reduce project delivery delays through close collaboration with LPAs and the MDOT and FHWA/FTA. This is an ongoing task for the MPO.

Deliverables A.1.3: Maintained and updated TIP document, project meetings.

A.1.4 MPO Member Support

The MPO staff will assist LPAs and Coast Transit Authority with various needs, not limited to providing advice on compliance with federal and state regulations, assistance with transportation planning, support on project development, participation on committees and provision of data and mapping; also, education and training on ADA regulations, grant application and administration, and guidance regarding process and requirements. This is an ongoing task for the MPO.

Deliverables A.1.4: Technical assistance and special projects

A.1.5 MPO Professional Development

The MPO staff will continue to develop new skills and expertise in every aspect of transportation planning and public administration in order to further the efforts of the MPO by maintaining memberships in various organizations, attending conferences and participating in webinars. The MPO membership will be invited to attend MPO-sponsored professional development events. This is ongoing for the MPO.

Deliverables A.1.5: Webinars, conferences and classes for MPO staff

Mississippi Gulf Coast Metropolitan Planning Organization
Gulf Regional Planning Commission
FY 2017-2018 UPWP

A.1.6 Maintain Functionally Classified Roadway Network

MPO staff will coordinate with local jurisdictions and MDOT to update the Mississippi Gulf Coast's system of functionally classified roadways. This is an ongoing task for the MPO.

Deliverables A.1.6: Updated MPO functionally classified roadway maps

A.1.7 MPO Performance Measures for FAST Act Requirements

The MPO will coordinate with MDOT and Coast Transit Authority in order to ensure consistency to transition to establish performance targets that address the performance measures to use in tracking progress towards attainment of critical outcomes for the region of the metropolitan planning organization. The MPO performance measures will be completed by February 1, 2018,

Deliverables A.1.7: MPO performance measures

A.1.8 MPO Planning Program Contract Administration

The Mississippi Gulf Coast MPO sets aside STP funds available for use for projects and studies. In many cases the city or county will contract with MDOT using the funds. At times, GRPC will serve as LPA for various projects through for the development of transportation engineering conceptual designs, specifications, estimates and traffic engineering. This UPWP task allows GRPC staff to assistance with contracts administered by the local agencies and serve as the lead for other projects and studies identified through the MPO planning process. GRPC/MPO may determine that master service contracts will be more efficient and effective in delivering planning studies and projects. GRPC/MPO will follow the MDOT procurement process to select consultants qualified to support the UPWP and STP goals/objectives. This is an ongoing task for the MPO.

Deliverables A.1.8: Procurement of contracts and contract administration

A.1.9 MPO Leadership

The MPO staff assume a leadership role to inform and educate MPO members, MPO committees and stakeholders on various aspects of the planning process, federal policies, programs, regulations and standards. MPO staff will attend and host meetings in order to promote and advance MPO goals and objectives, for example, to espouse the concepts of *Ladders of Opportunity*, to promote a regional perspective for transportation planning and to create partnerships for development of strong, multimodal projects. MPO staff will also promote transit by working closely with CTA to expose the region to the benefits to the community of supporting a quality transit system. This is an ongoing task for the MPO.

Deliverables A.1.9: Meeting materials and notes

Mississippi Gulf Coast Metropolitan Planning Organization
 Gulf Regional Planning Commission
 FY 2017-2018 UPWP

A.1.10 Project Consideration and Implementation

Recommendations and projects identified in the recently completed Metropolitan Transportation Plan (MTP), MPO’s Congestion Management Program, Safety Management Program, Off-street Paths Plan and soon to be completed Active Transportation Plan will be considered for development. This will include applying for grants, project evaluation, work with consultants on preliminary design and participation in committees. MPO staff will apply knowledge gained from professional development to develop projects that include the latest best practices for safety, traffic flow, pedestrian and bicycle on the Gulf Coast. This is an ongoing task.

Deliverables A.1.10: MPO project evaluations

Projected Cost of Task A-1: MPO Administration & Program Management

TASK	Total	PL funds	Local Match	FTA-FLEX	MDOT Match	SPR Funds	MDOT Match
A-1 Staff	\$854,744	\$483,795	\$120,949	\$200,000	\$50,000		
A-1 Other	\$40,000	\$32,000	\$8,000				

Mississippi Gulf Coast Metropolitan Planning Organization
Gulf Regional Planning Commission
FY 2017-2018 UPWP

A.2 OUTREACH AND EDUCATION

Responsible Party and Contact Information:

Name/Title: David Taylor
Telephone Number: 228-864-1167
Email: dtaylor@grpc.com

Purpose and Scope:

The MPO will undertake the strategic measures identified in the MPO Public Participation Plan, first, *to create a more informed public* on the transportation planning process by providing unique, engaging opportunities for involvement and education on transportation planning issues and processes. Secondly, the outcome of engagement will be *to inform the MPO planning process*, using public input to identify where gaps exist in the transportation system and how necessary connectivity is to the quality of the lives of people, by expanding their mobility options and access to areas of opportunity. One emphasis area of the outreach and education program will be the implementation of a workforce training and development program that will significantly increase awareness of and participation in regional transportation safety improvement efforts. GRPC may contract with consultants for the performance of some of the public participation and outreach tasks.

Accomplishments during Previous Work Program Period:

MPO staff began plans for its new and improved outreach and education efforts focused around transportation safety. GRPC hosted several workshops and seminars such as innovative intersection design, access management, and 2016 Bike Walk Mississippi. Staff also assisted with MDOT's LTAP program. GRPC helped Coast Transit Authority with their public involvement processes. GRPC's new website was launched. GRPC and consultants provided public meetings for the development of the 2040 Metropolitan Transportation Plan.

Planned Activities for this Work Program:

A.2.1 Public Participation

The MPO staff will assess the effectiveness of the Public Participation Plan (PPP) strategies in achieving planning goals, and make refinements and updates as needed including setting public outreach performance measures. Staff will provide for the implementation of required public meetings and comment periods for MPO documents, the Transportation Improvement Program and assist with Coast Transit Authority public participation. MPO staff will provide opportunity for the public to review and comment on plans and programs. Review and consideration of comments received will be incorporated into the various planning projects and programs. Staff will update the MPO's Public Participation Plan (PPP) as needed. This is an ongoing task for the MPO.

Deliverables A.2.1: Public meetings, notices, assessment of Public Participation Plan (PPP) effectiveness, outreach materials and supplies.

Mississippi Gulf Coast Metropolitan Planning Organization
 Gulf Regional Planning Commission
 FY 2017-2018 UPWP

A.2.2 MPO Communication

MPO staff will update the GRPC’s website to include all relevant documents, data and notices. The Get to B safety program will be promoted by providing educational resources, event announcements, new social media accounts and templates for electronic newsletters, a blog and email notifications. This is an ongoing task for the MPO.

Deliverables A.2.3: Updated GRPC website, e-newsletter, social media pages, print materials, display materials

A.2.3 Transportation Workforce Development

The MPO will provide low and no cost training opportunities for targeted audiences including; engineers, planners, public works staff, law enforcement officers, consultants, maintenance crews, safety professionals, elected officials, advocates, MPO members, and others. MPO staff will also assist MDOT with their LTAP program providing training to transportation stakeholders. GRPC may contract with consultants for the performance of some of this task. This is an ongoing task for the MPO.

Deliverables A.2.4: MPO hosted workshops and seminars, MDOT LTAP program support

A.2.4 Safe School Access Audits

MPO staff will engage district and school staff in the road safety discussion, developing a safety audit team, conducting audits within the mapped school zone, developing a summary report for each participating school that notes identified deficiencies and makes improvement recommendations, with support of hired consultants. MPO staff will support the school district, local governments, and other interested parties in developing projects to construct and install approved countermeasures in identified risk areas. The first iteration of the program will focus on K-12 public schools within the 11 school districts of the MPO urbanized area. In later years, the program can expand to include private schools, college campuses, and/or broaden the evaluation area around each school to expand connectivity and accessibility even further. This is an ongoing task for the MPO.

Deliverables A.2.4: A summary report for each school audited

Projected Cost of Task A-2: Outreach and Education

TASK	Total	PL funds	Local Match	FTA-FLEX	MDOT Match	SPR Funds	MDOT Match
A-2 Staff	\$140,833	\$85,348	\$21,337	\$27,318	\$6,829		
A-2 Other	\$15,000	\$12,000	\$3,000				

Mississippi Gulf Coast Metropolitan Planning Organization
Gulf Regional Planning Commission
FY 2017-2018 UPWP

B.1 TRANSPORTATION SYSTEM DEVELOPMENT

Responsible Party and Contact Information:

Name/Title: David Taylor
Telephone Number: 228-864-1167
Email: dtaylor@grpc.com

Purpose and Scope:

MPO staff will use items presented in this section to improve mobility and access of the transportation system on the Mississippi Gulf Coast.

Accomplishments during Previous Work Program Period:

MPO staff worked with MDOT and consultants to complete the 2040 Metropolitan Transportation Plan. GRPC also completed an update to the Congestion Management Plan which was used to identify and evaluate various projects in the region. GRPC worked with CTA to scope a study, acquire local match commitments and select consultants for the East-West Corridor Study. MPO staff worked very closely with CTA on 2015 and 2016 route changes. Tasks included the development of options, evaluations, considering customer impacts and implementation. MPO staff updated CTA's Title VI plan. This plan outlines service standards and route change guidelines for CTA. MPO staff worked with CTA to update the Transit Development Plan. This plan will be used to provide an outline of new routes and infrastructure to be considered for the next 5 years and on.

Planned Activities for this Work Program:

B.1.1 Active Transportation Plan

MPO staff will address the safety program emphasis areas "Making Walking and Street Crossing Safer" and "Ensuring Safer Bicycle Travel" by developing and implementing a plan to expand and improve amenities for bicycles and pedestrians. This plan will include but is not limited to a vision for a shared use path network, road diet opportunities, speed management program, pedestrianized intersection program and signage program. GRPC may contract with consultants for the performance of some tasks. This task will help guide decision making for roadway project identification and development. This plan will be ready by the end of FY 17.

Deliverables B.1.1: MPO Active Transportation Plan

B.1.2 East-West Mobility Study

MPO staff will work with Coast Transit Authority and consultants to study and prepare for construction roadway alignments and mobility options in the vicinity of the CSX railroad corridor. The project will include review and evaluation of east-west corridor alignments and design

Mississippi Gulf Coast Metropolitan Planning Organization
Gulf Regional Planning Commission
FY 2017-2018 UPWP

elements developed in previous studies toward development of a priority corridor project that both provides adequate levels of multi-modal mobility, and has realistic potential for being built. Emphasis will be placed on increasing alternative mobility options, and a project concept that integrates transportation, land use, and environmental considerations. The study process shall include, but not be limited to: location and design of new facilities; upgrade of existing roadway and the consideration of high occupancy mobility options. This study will be ready by the end of FY 18.

Deliverables B.1.2: Study and implementation plan

B.1.3 Rail Corridor Plan Development

MPO staff will support the restoration of Amtrak passenger rail service along the CSX rail line from Louisiana to Florida. As a member of the FRA Gulf Coast Working Group, the MPO will participate in the meetings, provide data and information to the development of the Congressional Report, and keep the cities, counties and stakeholders informed and involved in the planning and implementation process. The MPO will assist the LPA's in planning for infrastructure improvements, facilitating the regional dialogue needed to address the many facets of implementing a multi-jurisdictional rail operations that is planned as a major multimodal component along the East-West Corridor. Consulting support may be needed to fulfill this task. This will be ongoing throughout FY 2018.

Deliverables B.1.3: Meeting notes, materials, presentations and reports

B.1.4 Coast Transit Authority 5-year plan

MPO staff will work with CTA to implement specific components of the recently completed Transit Development Plan (TDP). Individual efforts will be undertaken to prepare for implementation of various infrastructure and operating items from the TDP. Task will include but are not limited to formalizing stops to terminate the existing hail system, transitioning from a 45/90 minute headway system to 30/60 minute headways, establishing super stops or hubs, transit signal preemption and planning for new routes. This task includes many projects that will be completed throughout FY 17 and FY 18.

Deliverables B.i.4: Planning and implementation of TDP components

B.1.5 CTA Service Review Plan

The Service Review Plan, which takes place annually, provides for a general evaluation of all transit services considering changes in the local environment (funding, population, development). The Plan identifies new transit services or significant changes to existing services for the following year.

Mississippi Gulf Coast Metropolitan Planning Organization
Gulf Regional Planning Commission
FY 2017-2018 UPWP

The Plan identifies changes that are designed to achieve specific service goals and opportunities for service expansion and improvement. The evaluation process guidelines considered will include but are not limited to:

- Local funding availability from the entity where the service is located
- Service or portion of the service is not performing to an acceptable ridership level
- Consider adding service in unserved areas (gaps) which are identified as transit-supportive based on population density, low-income or minority areas such, Pascagoula, Moss Point, Orange Grove and Pops Ferry Road.
- New or unserved trip generators including, employment centers, shopping, educational facilities, medical institutions, government/community facilities and tourist attractions
- Travel time adjustments to improve failing on-time performance
- Consider opportunities for headway reduction
- Consider impacts on those areas served created by a reduction or loss of service
- Consider the role the route may play in connecting to the larger transit network. Important transfer points and mobility routes should be given additional review
- Consider existing duplication in services from the overlap of service areas from two or more routes

MPO staff will also define and analyze adverse effects related to changes in transit service to all types of changes. Changes in service that have an adverse effect on overall ridership, a disparate impact to minority populations or a disproportionate burden on low-income populations from reductions in service will be considered. This task will be done in FY 17 and then again in FY 18.

Deliverables B.1.5 Service Review Plan and customer impact analysis

B.1.6 Off-Street Paths Program

MPO staff will develop a plan that provides a vision for off street paths in the region. Paths may include connections in neighborhoods, power line, pipe and other existing easements. GRPC may contract with consultants for the performance of some tasks. This task will be complete in FY 17.

Deliverables B.1.6: Off-street Paths Plan

B.1.7 Gulf Coast Freight

MPO staff will prepare a report that outlines the Gulf Coast freight truck activity, generators, and economic impacts. The report will provide a needs assessment, recommendations and data that will be used to identify and evaluate projects to support freight activity. This report would be completed in FY 2018.

Mississippi Gulf Coast Metropolitan Planning Organization
 Gulf Regional Planning Commission
 FY 2017-2018 UPWP

Deliverables B.1.7: Freight truck report

B.1.8 Update to CTA Plans

MPO staff will provide required updates to CTA planning documents including the Title VI Plan, Locally Coordinated Services Transit Plan, Transit Development Plan, Transportation Improvement Plan, etc.

Deliverables B.1.8: Plan updates as required

Projected Cost of Task B-1: Transportation Systems Development

TASK	Total	PL funds	Local Match	FTA-FLEX	MDOT Match	FTA-5339	Match
B-1 Staff	\$306,720	\$45,376	\$11,344	\$200,000	\$50,000	\$80,000	\$20,000
B-1 Other	\$15,000	\$12,000	\$3,000				

Mississippi Gulf Coast Metropolitan Planning Organization
Gulf Regional Planning Commission
FY 2017-2018 UPWP

B.2 RESILIENCY AND LAND USE

Responsible Party and Contact Information:

Name/Title: David Taylor
Telephone Number: 228-864-1167
Email: dtaylor@grpc.com

Purpose and Scope:

These work plan items will provide for improved coordination between land use and transportation decisions. MPO staff will also use product from this section to incorporate resilience into the decision-making process when options and priorities are considered for transportation investments.

Accomplishments during Previous Work Program Period:

MPO staff began to develop a program that would enable regional attention to specific areas for development to create communities that would be dense, walkable, mixed-use communities centered around transit, walking and bicycling. These areas would make it possible to live life without complete dependence on a car for mobility.

Planned Activities for this Work Program:

B.2.1 Transit Oriented Development (TOD) Program

The MPO staff will apply standard rules regarding the relationship of land use and transit will create a context sensitive method to identify potential Transportation Oriented Development (TOD) areas on the MS Gulf Coast. These areas will be designed and developed with bicycle, pedestrian and transit amenities to provide accessibility, safety and comfort to these modes as connectivity is enhanced as a means of increasing mode share/shift from single occupant vehicles to transit, walking and bicycles. Working with local planners and planning officials, these areas will be targeted for zoning changes or ordinances that would encourage high intensity mixed-use development. This program will provide MPO planners with areas of focus to direct planning activities and funds. Funding would be prioritized by the MPO to support development of the transportation infrastructure in such a manner as to reinforce this type of development strategy. The GRPC may contract with consultants for the performance of some tasks. This task will be complete in FY 17 and would be implemented in FY 18.

Deliverables B.2.1: MPO TOD program

B.2.2 Climate Change

MPO will improve the resiliency of the transportation system by addressing the vulnerability of the Gulf Coast roadway infrastructure to sea level rise and storm water. MPO staff will create an

Mississippi Gulf Coast Metropolitan Planning Organization
 Gulf Regional Planning Commission
 FY 2017-2018 UPWP

inventory of roadways and critical facilities that are vulnerable to these events. GRPC may contract with consultants for the performance of some tasks. This task will be complete in FY 17 and would be implemented in FY 18.

Deliverables A.2.5: MPO climate change program

B.2.3 Regional Landuse Vision

Land use planning must be conducted concurrently with transportation and public utility planning. Therefore, MPO staff will develop a regional land use vision that is the result of the evaluation of alternative growth scenarios including continuing the existing development and transportation trends. The purpose of this ongoing task is to evaluate possible outcomes and consequences of each scenario as it compares to Gulf Coast objectives developed through this planning process such as:

- Minimize vehicle emissions
- Minimize loss of life
- Provide walkable communities
- Provide efficient transit
- Maximize open space
- Provide universal access to employment centers
- Provide land use patterns that support economic development

Deliverables B.2.6: Regional land use vision planning

Projected Cost of Task B-2: Sustainable Transportation Program

TASK	Total	PL funds	Local Match	FTA-FLEX	MDOT Match	SPR Funds	MDOT Match
B-2 Staff	\$158,314	\$126,651	\$31,662				
B-2 Other	\$10,000	\$8,000	\$2,000				

Mississippi Gulf Coast Metropolitan Planning Organization
Gulf Regional Planning Commission
FY 2017-2018 UPWP

B.3 SAFE ROADS

Responsible Party and Contact Information:

Name/Title: David Taylor
Telephone Number: 228-864-1167
Email: dtaylor@grpc.com

Purpose and Scope:

The MPO has structured many aspects of its planning process around safety. The MPO's safety program is designed to address the safe access and mobility of all modes of transportation. GRPC may contract with consultants for the performance of some tasks.

Accomplishments during Previous Work Program Period:

The MPO's Safety Program was implemented by working with MDOT and FHWA to develop an innovative project development process that allowed GRPC to be the project lead on the safety projects. GRPC contracted with consultants to develop the plans, specs and engineering for the PH I projects. GRPC then worked with the counties to bid the projects out and begin construction. MPO staff worked with CTA to locate, permit and put in place over 50 transit shelters in the region. MPO staff began identifying PH II safety projects.

Planned Activities for this Work Program:

B.3.1 Lane Departures Program

This is a continuing program in response to the MPO's Safety Program Emphasis areas "Keeping Vehicles on the Roadway & Reducing Head-On and Across-Median Crashes", MPO staff will identify roadways for safety improvement projects with high instance of run off the road accidents or through systemic approaches. GRPC may contract with consultants for the performance of some tasks. The projects for this task will be identified and staff will work to implement them in FY 17.

Deliverables B.3.1: PH II safety management report

B.3.2 Intersection Safety Program

MPO staff will continue to address the safety program emphasis area "Improving the Design and Operation of Highway Intersections" by identifying sites with higher than expected accident frequencies which may indicate the presence of safety concerns will be identified. GRPC may contract with consultants for the performance of some tasks. The projects for this task will be identified in FY 17.

Mississippi Gulf Coast Metropolitan Planning Organization
 Gulf Regional Planning Commission
 FY 2017-2018 UPWP

Deliverables B.3.2: Safety management report for intersections

B.3.3 Railroad Corridor Safety Program

MPO staff will address the safety program emphasis area “Reducing Vehicle-Train Crashes” working with regional stakeholders and MDOT to maximize safety at all railroad crossings on the Gulf Coast. MPO staff will use stakeholder participation to provide information, analyze and evaluate various data and make recommendations for improvements. The MPO will stakeholders to enhance safe operations, development of quiet zones, assessment of crossings for closure and others issues of rail safety. GRPC may contract with consultants for the performance of some tasks. This is an ongoing task.

Deliverables B.3.3: Railroad crossings information and material

Projected Cost of Task B-3: “Get to B” Safety Program

TASK	Total	PL funds	Local Match	FTA-FLEX	MDOT Match	SPR Funds	MDOT Match
B-3 Staff	\$63,275	\$50,620	\$12,655				
B-3 Other	\$20,000	\$16,000	\$4,000				

Mississippi Gulf Coast Metropolitan Planning Organization
Gulf Regional Planning Commission
FY 2017-2018 UPWP

C.1 PLANNING TOOLS AND DATA DEVELOPMENT

Responsible Party and Contact Information:

Name/Title: David Taylor
Telephone Number: 228-864-1167
Email: dtaylor@grpc.com

Purpose and Scope:

To develop and maintain the data, systems and applications necessary to support the short and long range planning process; including spatial and non-spatial databases, planning applications and the computer network to service the agency. Contractual support may be required for collection and analysis of data.

Accomplishments during Previous Work Program Period:

MPO staff maintained land use databases, street centerline maps, began incorporating accident data into MPO planning programs. Staff worked with consultants to develop existing and forecasted TAZ data for use in the Travel Demand Model.

Planned Activities for this Work Program:

C.1.1 Land Use and Demographic Data

MPO staff will maintain databases of planning variables that will be used for various planning projects as well as the travel demand model. GRPC may contract with consultants for the performance of some tasks. This is an ongoing task.

Deliverables C.1.1: MPO spatial databases

C.1.2 GIS Support

The MPO staff will continually develop GIS map and data products for the purpose of supporting the MPO transportation planning process including long range planning, short range planning, transportation improvement projects, transit planning and public participation. The MPO provides specific GIS and mapping assistance to Coast Transit Authority. This is an ongoing task.

Deliverables C.1.2: Project support, regional street centerline map, CTA route maps

C.1.3 Regional Apartment Survey

A consultant will provide an annual update to the Gulf Coast Apartment Study. This is an annual report.

Deliverables C.1.4: Gulf Coast Apartment Study

Mississippi Gulf Coast Metropolitan Planning Organization
 Gulf Regional Planning Commission
 FY 2017-2018 UPWP

C.1.4 MPO Retroreflectivity Program

MPO staff will establish a regional system for the Mississippi Gulf Coast Local Public Agencies to inventory, inspect, replace and/or repair (as needed) and maintain all regulatory, warning and guide signage which fail to meet the minimum retroreflectivity requirements as established by the Federal Highway Administration in a timely, cost efficient manner. GRPC may contract with consultants for the performance of some tasks. This is an ongoing task.

Deliverables C.1.7: Gulf Coast retroreflectivity program

C.1.5 Travel Demand Modeling

MPO staff will use the travel demand model to forecast traffic volumes, patterns and vehicle miles traveled (VMT) based on various scenarios. This tool is used to help make planning and funding decisions for transportation projects. MPO staff will use the model to help develop the region’s Metropolitan Transportation Plan (MTP), special projects and provide information for MPO decision making. MPO staff will work with consultants to update the current travel demand model. GRPC may contract with consultants for the performance of some tasks. This is an ongoing task.

Deliverables C.1.10: Travel demand model applications

C.1.6 NTD Passenger Sampling

MPO staff will perform passenger sampling survey to for unlinked passenger trips. The trips must be reported by average weekly time periods (AM peak, midday, PM peak, and other) and by average weekly total, average Saturday total, average Sunday total and annual total. Passenger miles must be reported only as totals for the average weekday, average Saturday, average Sunday, and annual. The annual estimates for these service consumed data must be obtained by random sampling procedures according to specified confidence and precision levels. This project will be complete in FY 17.

Deliverables C.1: FY 2017 unlinked passenger trip report

Projected Cost of Task C-1: Planning Tools and Data Development

TASK	Total	PL funds	Local Match	FTA-FLEX	MDOT Match	SPR Funds	MDOT Match
C-1 Staff	\$296,539	\$192,231	\$48,057	\$45,000	\$11,250		
C-1 Other	\$5,000	\$4,000	\$1,000				

Mississippi Gulf Coast Metropolitan Planning Organization
 Gulf Regional Planning Commission
 FY 2017-2018 UPWP

C.2 INFORMATION SYSTEMS MANAGEMENT

Responsible Party and Contact Information:

Name/Title: David Taylor
 Telephone Number: 228-864-1167
 Email: dtaylor@grpc.com

Purpose and Scope:

To keep the MPO staff current on all technology related means of advancing the MPO planning process more effectively. GRPC may contract with consultants for the performance of some tasks.

Accomplishments during Previous Work Program Period:

MPO staff maintained its servers, software and hardware needs.

Planned Activities for this Work Program:

C.2.1 Technology Support

MPO staff will identify, implement and maintain the information system network design and communications technologies critical to the MPO transportation planning activities. Needed hardware and software will be prioritized, purchased and implemented. GRPC may contract with consultants for the performance of some tasks. This is an ongoing task.

Deliverables C.2.1 Technologically effective MPO

C.2.2 Website Maintenance

MPO staff will routinely maintain and update MPO websites. GRPC may contract with consultants for the performance of some tasks. This is an ongoing task.

Deliverables C.2.2 Updated websites

Projected Cost of Task C-2: Information Systems Management

TASK	Total	PL funds	Local Match	FTA-FLEX	MDOT Match	SPR Funds	MDOT Match
C-2 Staff	\$255,383	\$204,306	\$51,076				
C-2 Other	\$27,435	\$21,948	\$5,487				

Mississippi Gulf Coast Metropolitan Planning Organization
 Gulf Regional Planning Commission
 FY 2017-2018 UPWP

D.1 TRAFFIC DATA COLLECTION PROGRAM

Responsible Party and Contact Information:

Name/Title: David Taylor Email: dtaylor@grpc.com
 Telephone Number: 228-864-1167

Purpose and Scope:

MPO staff will develop and maintain an annual traffic count program schedule and continually monitor program progress. Periodic assessment of progress and methodology will be performed and necessary programmatic modifications will be made. GRPC may contract with consultants for the performance of some tasks.

Accomplishments during Previous Work Program Period:

MPO staff reviewed and updated traffic count locations. We performed all required and special traffic counts.

Planned Activities for this Work Program:

D.1.1 Traffic Data Collection and Processing

Perform traffic volume counts according to a monthly schedule. GRPC may contract with consultants for the performance of some tasks. This is an ongoing task.

Deliverables D.1.1: *Traffic counting program for Hancock, Harrison and Jackson Counties*

D.1.2 Traffic Data Analysis and Reporting

MPO staff will develop AADTs and annual submittal to MDOT. We will also provide annual Traffic Count Report and web-based data access. This is an ongoing task.

Deliverables D.1.2: *AADT report, GIS files, interactive on-line traffic count application.*

D.1.3 Equipment Inventory, Acquisition and Maintenance

MPO staff will maintain required supply inventory and provide traffic-counter repair and replacement. Possible traffic count vehicle replacement. This is an ongoing task.

Deliverables D.1.3: *Traffic counting equipment*

Projected Cost of Task D-1: Traffic Data Collection Program

TASK	Total	PL funds	Local Match	FTA-FLEX	MDOT Match	SPR Funds	MDOT Match
D-1 Staff	\$274,413					\$219,530	\$54,883
D-1 Other	\$25,587					\$20,470	\$5,117
TOTAL	\$2,508,243	\$1,294,275	\$323,567	\$472,318	\$118,079	\$240,000	\$60,000

Mississippi Gulf Coast Metropolitan Planning Organization
 Gulf Regional Planning Commission
 FY 2017-2018 UPWP

E.1 REGIONAL PROJECTS AND STUDIES

Responsible Party and Contact Information:

Name/Title: David Taylor
 Telephone Number: 228-864-1167
 Email: dtaylor@grpc.com

Purpose and Scope:

Technical studies of special interest, including but not limited to planning, engineering, design, plan development, operational service planning, transit asset management plans, safety plans, and management and operation planning studies. Consultants may be used for the performance of these tasks.

Accomplishments during Previous Work Program Period:

Jackson County Beachview Dr. Study, Long Beach Pineville Rd Study, Diamondhead Traffic Circulation Study, Jackson County US 90 Multiuse Pathway Study, Jackson County Bike Study, Ocean Springs Road Study

Planned Activities for this Work Program:

E.1.1 MPO Projects and Studies

Any MPO member jurisdiction may apply for funding assistance for a transportation improvement-related study effort directed toward a purpose that consistent with MPO goals and objectives. Generally, if a proposed study is aimed toward improving traffic flow, mobility options, accessibility and/or travel safety, it is likely to be determined eligible. Studies currently planned for this work program include but will not be limited to: Waveland Sidewalk Study and Jackson County McCann Road Study.

E.1.2 Coast Transit Authority (CTA) Projects and Studies

CTA will perform various in-house planning studies relating to management, operations, capital requirements, and economic feasibility; work elements and related activities preliminary to and in preparation for constructing, acquiring, or improving the operation of facilities and equipment; plans and specifications; evaluation of previously funded projects; job access and reverse commute projects; and other similar or related activities before and in preparation for the construction, acquisition, or improved operation of public transportation systems, facilities, and equipment.

E.1.3 Mississippi Department of Transportation (MDOT) Projects and Studies

None

TASK	TOTAL	Sec. 5307	5307 Local Match	MPO STP	STP Local Match	SPR Funds	SPR Match
E.1		\$600,000	\$150,000	\$800,000	\$200,000		